

FlexHammer™ FH 1800 Crawler



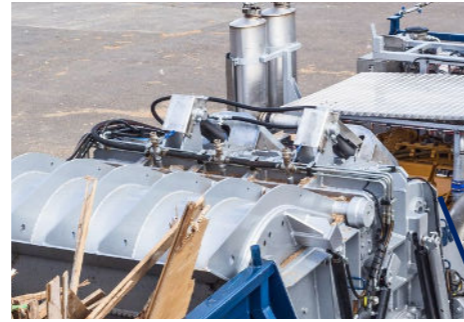
Solutions for industrial recycling

Solutions in waste handling

FH1800 Crawler details



GPS-dial-up service & maintenance support hub



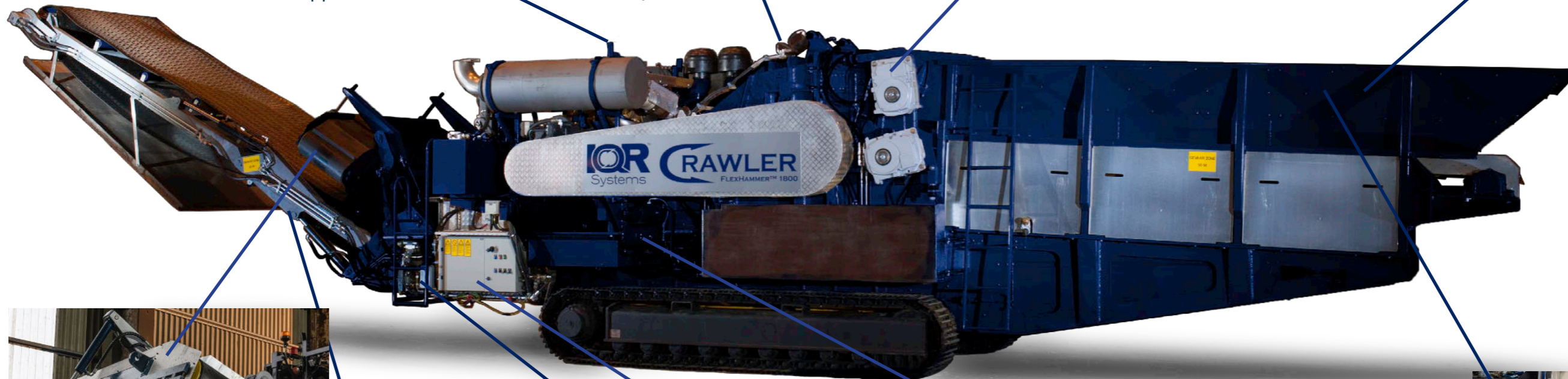
Flexhammer Reject Door



Feed Roller



Steel hopper



3200 KG / 7055 lbs
Swedish ELME-magnet, electro



Stainless steel frame
under magnet



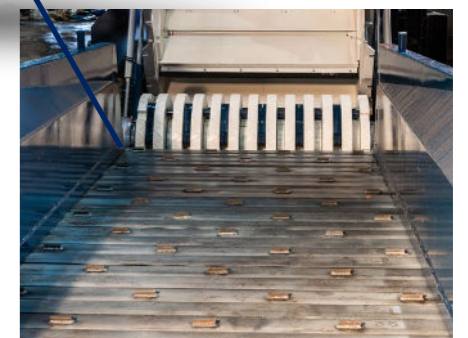
Swedish quality
Åkerström remote



IP 65 e-cabinets



CAT C32 - 1125-1200 bhp



Steel aprons
reinforced

IQR FlexHammer™ 1800 Crawler



WELL KNOWN FOR IT'S UNBEATEN CAPACITY AND FLEXIBILITY.

The FH1800 Crawler Unit is a well known all purpose, heavy duty, high capacity hammermill of industrial quality standard.

The FlexHammer™ System explained

The IQR FlexHammer™ 1800 was engineered to handle waste materials such as industrial waste and wood waste. IQR, Industrial Quality Recycling, with a background of wood waste processing builds these machines for industrial heavy-duty users. It is the reliability; the low cost per ton and the fact that we build for longevity that makes our customers come back for another machine.

Typical feed materials:

- » Wood waste e.g. demolition timber, railway sleepers, treetops and branches, bark, offcuts from industries etc.
- » Household waste.
- » Industrial waste of different kinds.
- » Commercial waste, packing materials.

Finished products:

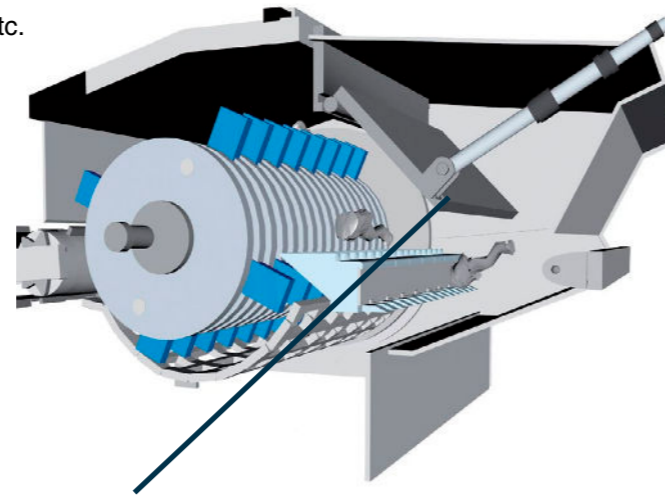
Are being used as fuel for energy production or for compost or just for volume reduction.

Particle size of finished products:

The hammermill's design allows for a large variety of the finished products' particle size. Typical finished products are e.g. between 0-2", 0-4" and 0-10".

Contaminations:

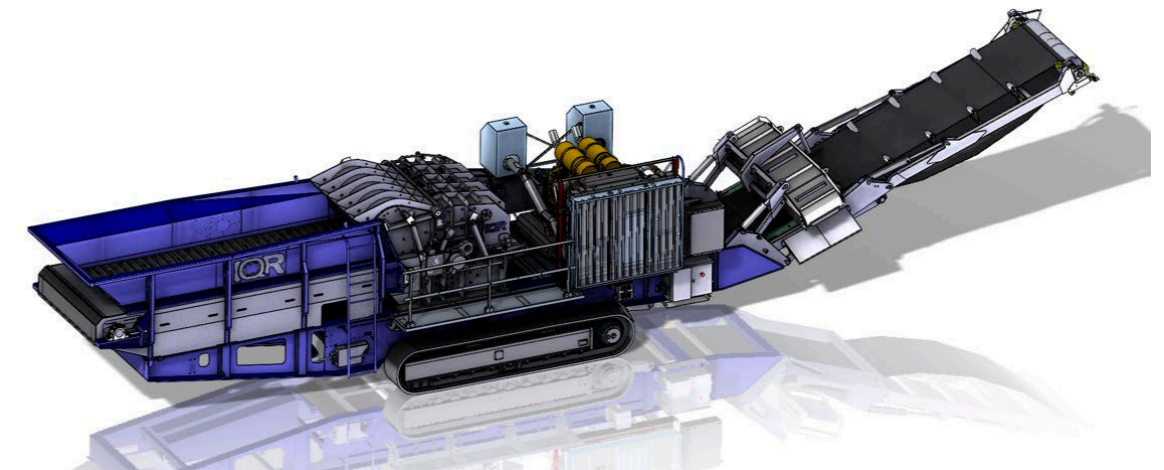
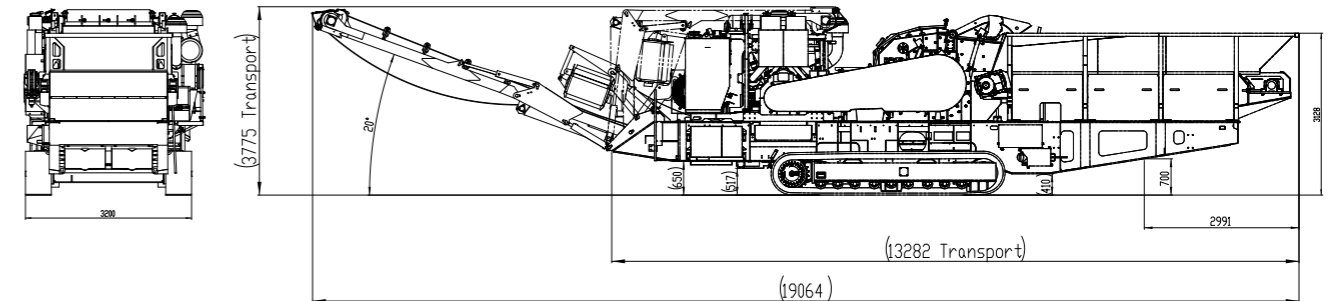
The hammermill has a mechanical safety device in form of a reject door which opens in case of pressure from uncrushable objects. Stones will be crushed.



FlexRejectDoor™
This is a safety device which protects the mill from damage and stoppages if any uncrushable material is fed in by mistake.

DATA

		IMPERIAL
Total weight:	~52,5 tonnes	116.000 lbs
Dimensions transport L/W/H:	13,3 / 3,5 / 3,77	43' 8" / 11' 5" / 12' 4"
Fuel capacity:	1900 litres	500 gallon
Feed opening dimensions, width:	1,80 m	70"
Feeder, Apron Feeder size. Size:	5,20/1,80	17' / 70"
Length/width:		
Rotor weight/with Hammers and shafts:	5230 kg	11500 lbs
Rotor width:	1,80 m	70"
Rotor diameter/tip to tip:	1200 mm	47"
Rotor shaft diameter:	295 mm	11,6"
Engine:	C32 CAT, V12	
Engine power:	1200 bhp	
Hydraulic capacity:	800 litres	210 gallons
Magnet type:	Electro	
Discharge belt width:	1,60 m	63"
Clutch:	HPTO-21	



The FlexHammer™ function

Firstly it is equipped originally with swinging hammer rotor. This enables the 48 hammers, each at 24 lbs, to swing back and hide between the rotor discs when tramp metal enters the mill. In this way damage is avoided. The hammers ability to flex back causes the unwanted object to be pushed out through the crushers reject door. The Reject System is reliable and user-friendly working with either a mechanical break-pin system or a hydraulic one.



The FlexHammer™'s heavy-duty rotor is built on an 11,6" shaft and has a total diameter of 47,2" from hammer-tip to tip. The hammers swing upwards and are therefore efficient in breaking the material fuel efficiently first at mill entry then onwards in mill roof, over the anvils and lastly over the exchangeable 3,15" steel screen.

The anvils are sometimes referred to as the knife segments. This is because they are positioned in such way that the hammers scissor their way through the anvil section. This is especially important when handling materials that not easily shatter but must also be cut.

The anvils also play a vital role in stopping any tramp metals, enabling the reject door to take that hit.

The model 1800 has a feeder and mill width of 70" which enables easy feeding and high throughput.

The 63" wide belt makes the material thickness as thin as possible when passing under the electro magnet. This magnet is powered by a generator and lifts over a 160 lbs at under 9" enabling the day-to-day smaller steel to be picked efficiently.



Example of contaminations





Solutions for industrial recycling

Headquarter, Trollhättan

Postal and delivery address

IQR Systems AB
Stallbackavägen 26
461 38 Trollhättan
Sweden





Phone & E-mail

Office: +46 520-48 58 80
info@iqr.se

Online

Webb & social media

www.iqr.se

 @IQRsystems
 @IQRsystems
 IQRsystems
 IQRsystems